

Project: **Apartment building "Moonlighting" - Geological survey**

Project ID: AA_0014 - 2019

Annex no.: B/1

Drilling equipment: ROTAMEC

Location: Prague

Overall depth: 17,00 m

Borehole position:

Date start: 19.02.2018

Foreman: Bill New

Ground water table:

Coordinate X: 1039742,80

Date end: 19.02.2018

Documented: John Young

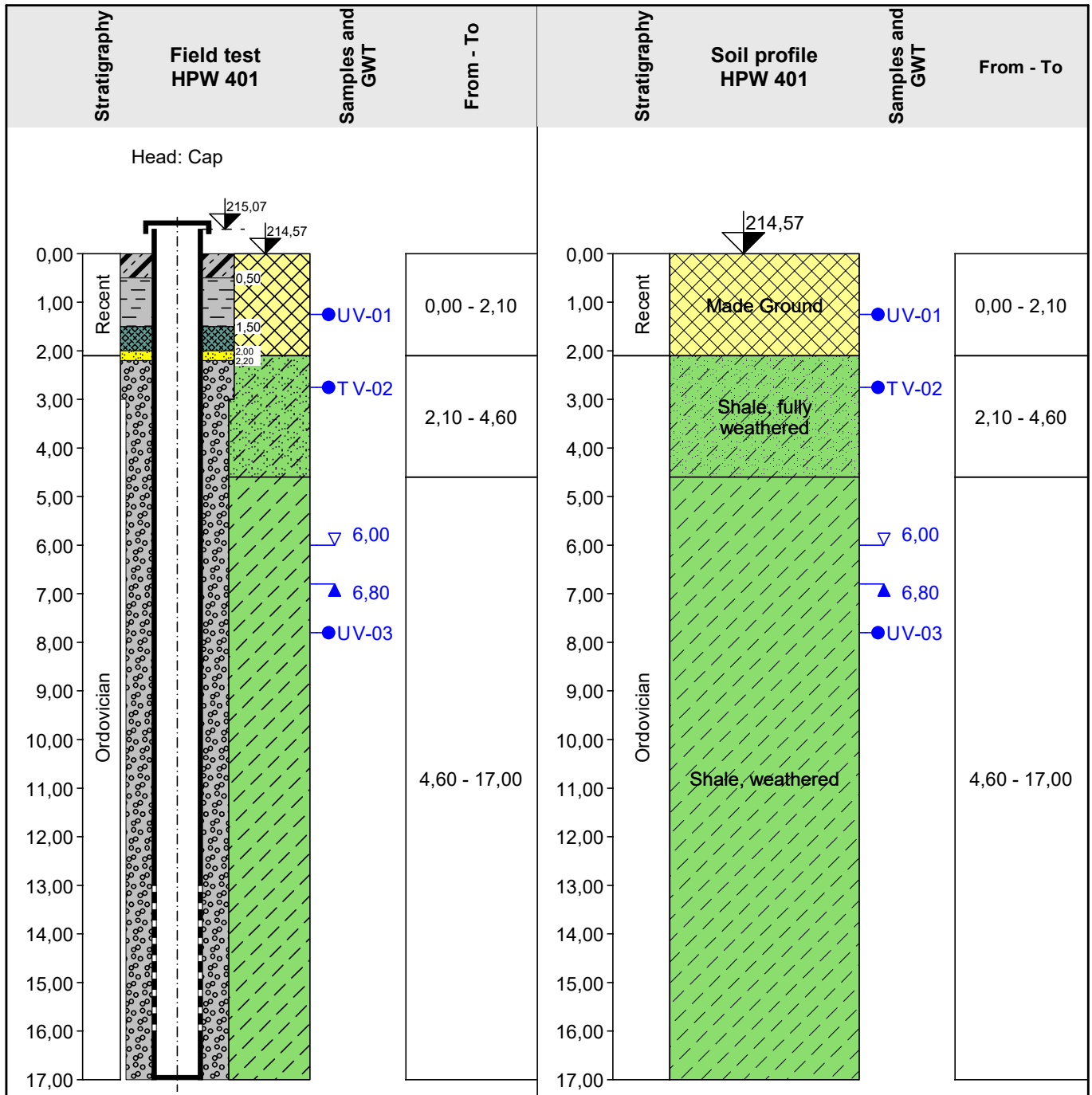
GWT bored: 6,00 m

Coordinate Y: 745182,14

Scale: one page

GWT steady: 6,80 m

Coordinate Z: 214,57 m



Key:

- GWT bored
- GWT steady
- full chemical analysis
- heavy metals