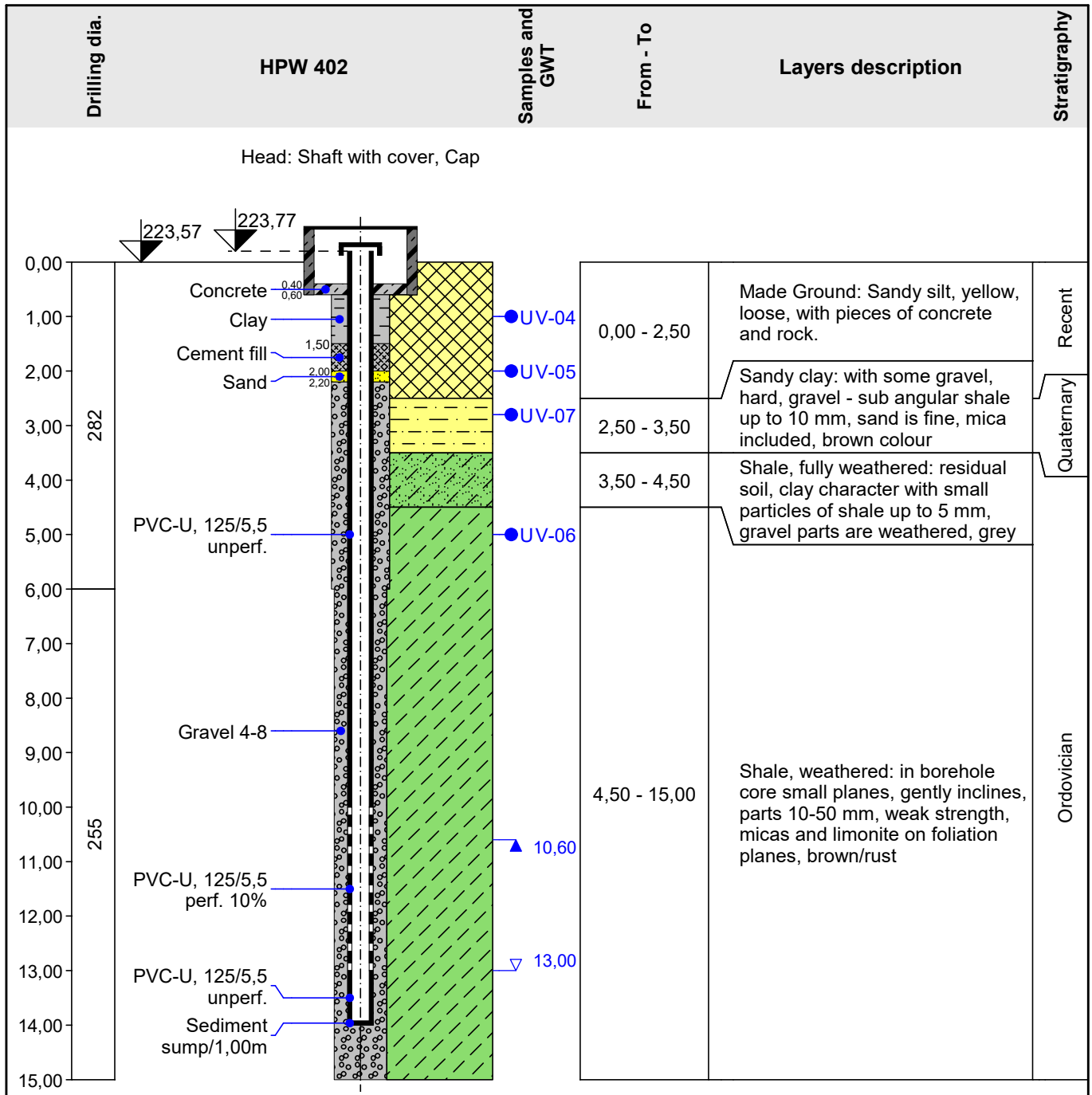


FINE spol. s r.o. Závěrka 12, Praha 6, 169 00		<b>Log of Well</b>		<b>HPW 402</b>
Project: <b>Apartment building "Moonlighting" - Geological survey</b>				
Project ID: AA_0014 - 2019		Annex no.: B/2	Drilling equipment: ROTAMEC	
Location: Prague		Overall depth: 15,00 m		Borehole position:
Date start: 19.02.2018	Foreman: Bill New	Ground water table:		Coordinate X: 1039723,80
Date end: 19.02.2018	Documented: John Young	GWT bored: 13,00 m		Coordinate Y: 745181,14
Scale: one page		GWT steady: 10,60 m		Coordinate Z: 223,57 m



<b>Key:</b>	
▽ GWT bored	● U full chemical analysis
▲ GWT steady	